

# Fully Automatic

**KM-4**



*Spacious and operator-friendly*

*KM-4  
Control House*

- *Siemens-based*
- *Proprietary PLC*
- *Centralized electrical panel*

## How is the KM-4 Fully Automatic?

All the KM-4 motors, sensors, and fuel gauges are managed by a Siemens-based programmable logic control (PLC) system.

The proprietary computer program automatically adjusts the fans, burners, and drives to achieve maximum throughput of material depending on ambient conditions and environmental requirements.

A single operator manages the KM-4 from a climate-controlled, weatherproof station that can be positioned to view all machine functions simultaneously.

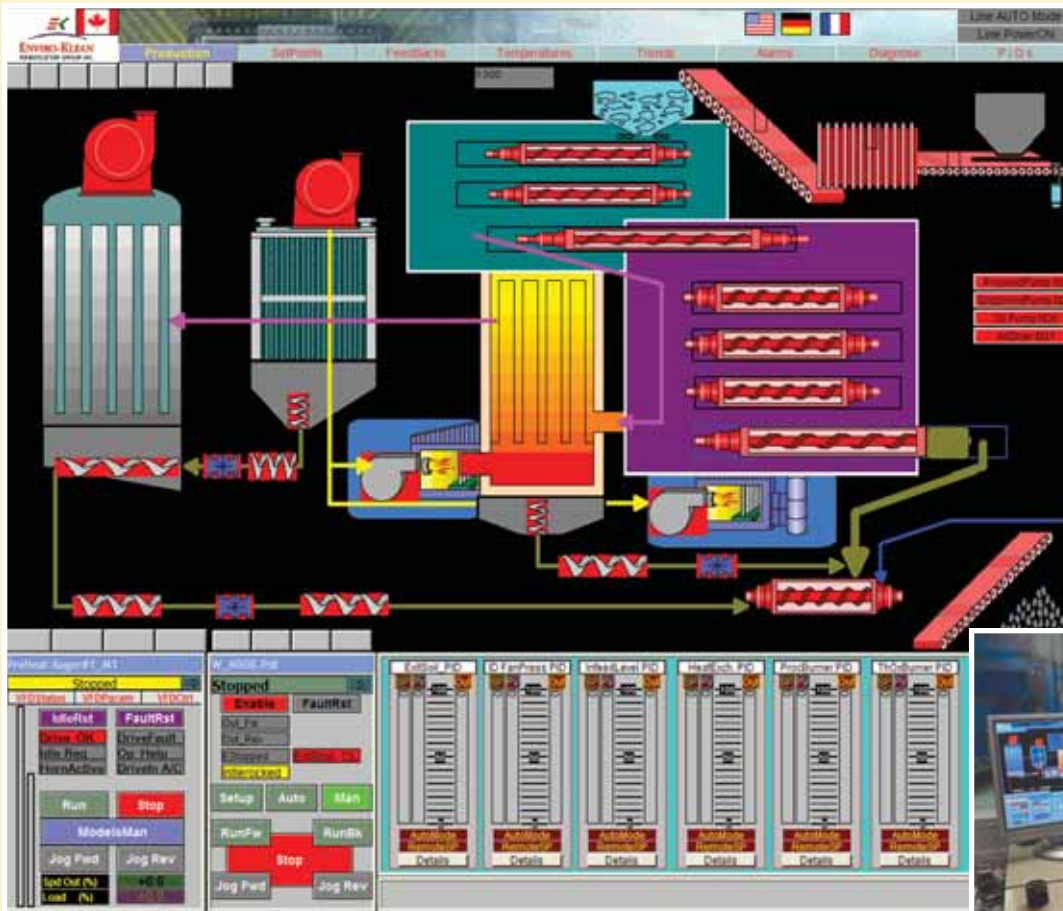


*Quick connect couplers are used on both the control house and main trailer.*

*Over 20 temperature and pressure sensors, more than 30 motors, plus all fuel system gauges are centrally connected on the main trailer.*



# Automation Increases Output

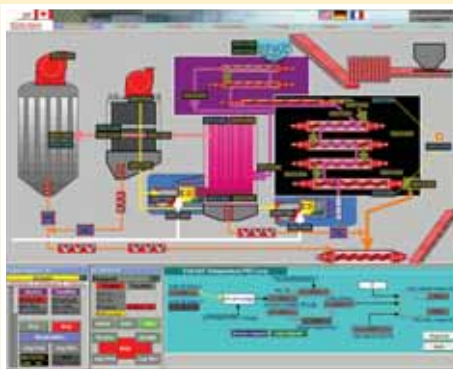


**Easy to Learn and Operate**  
 The KM-4 is operator friendly. Since the system is completely automatic, a few basic lessons familiarize the operator with the entire program.



*Twin monitors display additional production data.*

*Graphic display shows all the important KM-4 functions at a glance.*



**Avoid Potential Problems by Anticipating Upset Conditions**  
 This KM-4 display shows how it anticipates potential non-conforming conditions and corrects them automatically.

**Siemens Control Recognized as Best Worldwide**  
 Siemens controls are widely recognized as the best in the world and are available in five language choices.

**System Runs at Maximum Speed**  
 The KM-4 operator presets the parameters for each job so the equipment runs at maximum throughput.