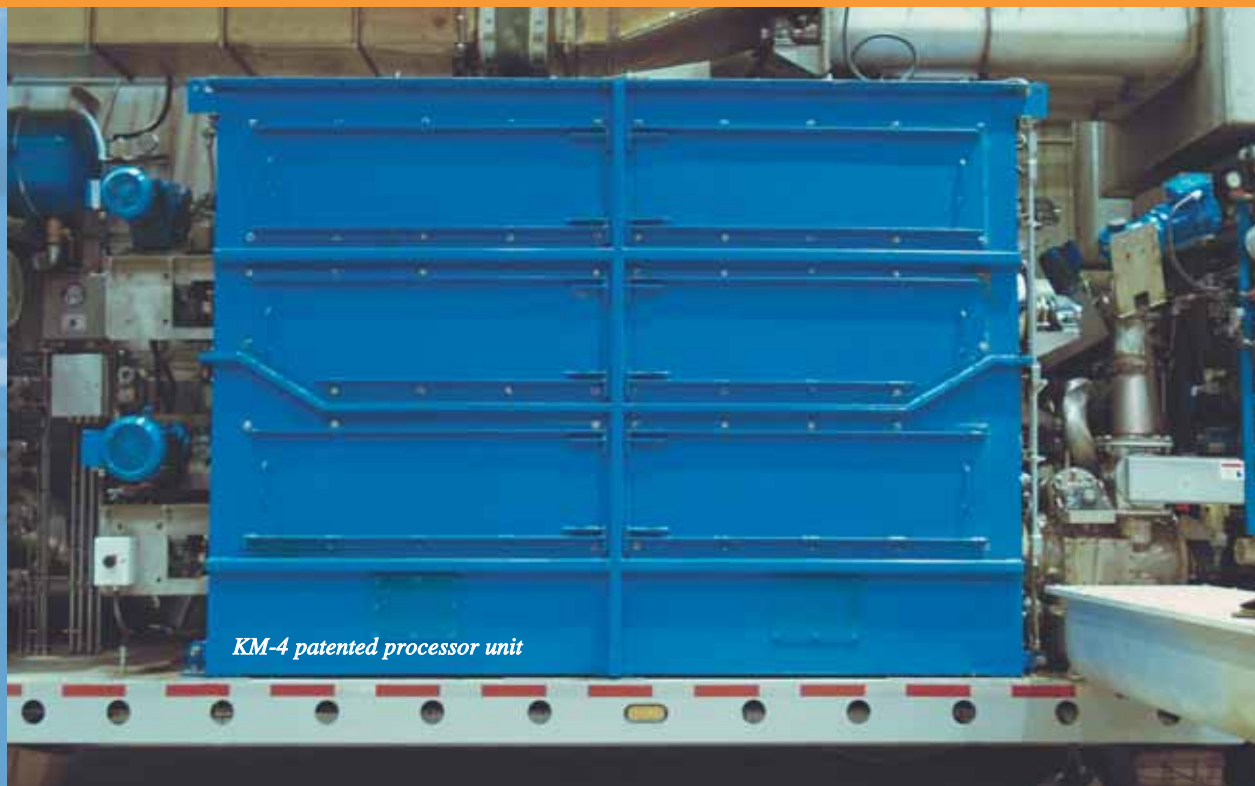


Engineered for 24/7

KM-4



KM-4 patented processor unit

How is the KM-4 Engineered for 24/7?

- *Advanced technology*
- *Operate outside or indoors*
- *CSA, UL, EU Certified*

Enviro-Klean's KM-4 is designed for discriminating equipment owners who value the time-and money-saving advantages of world class design.

This OEM equipment is manufactured on Canada's West Coast, an area widely-recognized as a North American leader for technical innovation.

It represents a significant advancement in the field of thermal desorption and results from the dedication of a committed group of mechanical, electrical, burner, mass balance, environmental, air flow and controls engineers.

The KM-4 will operate continuously under most extremes of outdoor conditions, whether in a dry desert or Northern sub-zero climates. And, although the equipment is designed for the rigors of continuous 24/7 operations, it's equally adept at 8- to 12-hour shifts.

KM-4 patent pending preheater unit



24/7- Longer Equipment Life



Quality Components

We select and install the highest quality components for 24/7 trouble-free operation.

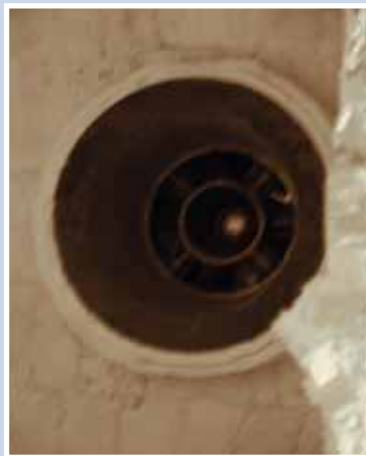


The processor unit maintains smooth operation with top-of-the-line SEW Eurodrive motors and gear reducers



Precision Fabrication

Stainless steel withstands all weather conditions as shown on the end view of the KM-4 proprietary heat exchanger.



Durable, Lightweight Refractory

Foam refractory protects furnace walls and keeps exterior surfaces of the KM-4 from overheating.



Heavy Duty Parts

The KM-4 uses shielded VFD cables and electrical components designed to withstand all weather conditions. Each major cable has a unique connector that prevents cross wiring of components.